

WOMENS FRW SOLUTIONS

WEAR WOLFTM

PROTECTIVE CLOTHING

FR



TEIJIN

Human Chemistry, Human Solutions

Wear Wolf FRTM
A division of
ROUGH RIDER FR, LLC



WEAR WOLF

PROTECTIVE CLOTHING

FR



CONE DENIM®

TEIJIN

Bootcut Mid Rise / 5 Pockets Jean

WL300CO14

14.5 oz. Statestrong FR Black Denim

Made with Twaron® (a versatile high-performance fiber Fiber) and Cotton
(see page 19)



FLASH FIRE



ELECTRIC ARC



HRC



CONTENTS

03 CONTENT BY PAGE

04 FABRICS GUIDE

LADIES FR COVERALLS Pages 6 to 12

- 06 Unlined Contractor Coverall
- 07 Tunnel Collar Unlined Coverall / Velcro / Hi-Vis
- 08 Deluxe Unlined Coverall
- 09 Deluxe Unlined Coverall / Hi-Vis
- 10 Deluxe Unlined Vented Coverall / Mesh Gas Monitor Pocket / Hi-Vis
- 11 Unlined Air Force Flight Suit
- 12 Unlined Petroleum Coverall / Hi-Vis

LADIES FR PANTS Pages 13 to 17

- 13 Basic Work Pant / Low Rise
- 14 Basic Work Pant / Regular Rise
- 15 Cargo Work Pant / Low Rise
- 16 Cargo Work Pant / Regular Rise
- 17 Jean Style Pant / Low Rise

LADIES FR JEANS Pages 18 to 19

- 18 Bootcut Low Rise / 5 Pockets Jean
- 19 Bootcut Mid Rise / 5 Pockets Jean

LADIES FR SHIRTS Pages 20 to 23

- 20 Work Snap Shirt
- 21 Work Button Shirt
- 22 Premium Deluxe Shirt
- 23 Vented Button Shirt / Hi-Vis

LADIES FR OUTERWEAR Pages 24 to 28

- 24 Lined Winter Bib Overall / Hi-Vis
- 25 Winter Insulated Artic Parka / Hi-Vis
- 26 Winter Insulated Bomber Parka
- 27 Vest Jacket Liner
- 28 Optional Snap-on Winter Hood
- 29 Care And Maintenance of Wear Wolf™ FR Garments
- 31 Men's Sizing Chart
- 33 Wear Wolf™ FR Order Form

**Wear Wolf™ FR, a div. of
ROUGHRIDER FR, LLC**



TEIJIN



Wear Wolf™ Fabric Guide

TEIJIN



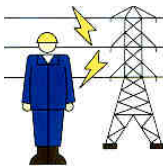
Teijinconex®

193% Teijinconex® / 5% Teijin Twaron / 2% antistatic

Teijinconex® is an advanced fiber with excellent flame proofing and heat resistance features as well as the features of a synthetic fiber clothing material.

It does not catch fire from a direct flame or heat, does not burn, and does not stick to your skin by melting. It has excellent features of high thermal insulation and excellent chemical resistance. Teijinconex® also demonstrates high standard features as a clothing material such as light, authentic, easy to clean, and comfortable to wear.

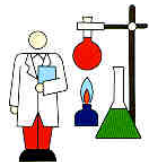
Teijinconex® delivers such high added values as safety and peace of mind without having to sacrifice comfort when worn as personal clothing.



1. Clothing for work involved with high voltages such as power companies and electrical construction work



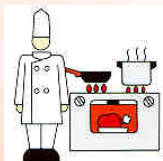
3. Clothing for security guards



5. Clothing for test rooms at research centers and chemical factories



7. Clothing for fire fighting



9. Clothing for professional kitchens and general home kitchens

2. Clothing for work places handling combustible or explosive materials such as gas companies, chemical companies, oil deposits, and oil tanks



4. Clothing for gasoline station attendants and tank lorry operators



6. Clothing for work near furnaces and welding



8. Clothing for racers and automobile maintenance workers



The range of applications for Teijinconex® is expanding to various other fields.

The circumstances surrounding accidental fires are changing in this rapidly progressing and advanced technological society. In the modern society, loss of precious lives or suffering from disasters in the work place or within residential environments are not tolerated even if the causes are accidental.

In this environment, clothing must be comfortable and at the same time must provide safety.

Our latest safety material Teijinconex® will protect you from various dangers in this advanced society.

Wear Wolf™ Fabric Guide

TEIJIN



Teijinconex®

93% Teijinconex® / 5% Teijin Twaron / 2% antistatic



Flameproof Cold Clothing

Teijinconex® ensures safe cold-weather clothing.

Most work places that emphasizes safety use Teijinconex® work clothing. These are light and warm flameproof fire resistant clothes with water repellent processing, developed in response to the request for Teijinconex® cold clothing".



Disaster can strike at any time.

Since Teijin's flameproof fiber, Teijinconex®, is used as the outer material, you can work with confidence at a cold site.

- o High heat resistance and flameproofing
- o Resistance to chemicals such as acids and alkalis
- o Strong and excellent endurance
- o Complying with antistatic requirement (JIS T8118)
- o Permanent water repellent processing

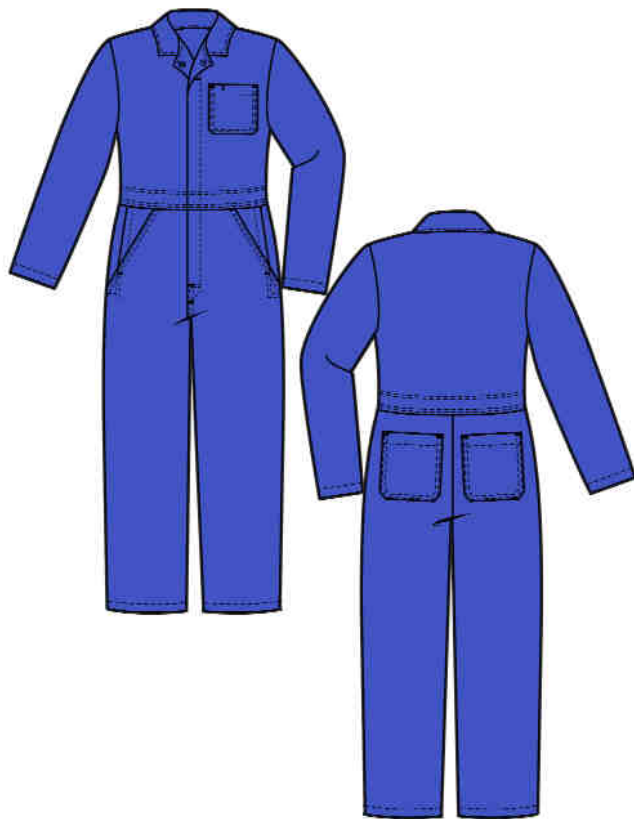
Statestrong FR Denim



Made with Twaron® (a versatile high-performance fiber Fiber) and Cotton

Cone Denim, a leading supplier of fabric to top denim apparel brands across the globe, as well as one of the oldest denim mills in the world, has mastered the art and science of denim, from crafting authentic vintage styles to developing the most beautiful denim fabrics in the world. Industry leaders are focused on merging fashion with protective, reliable industrial workwear fabrics to provide flame resistant denim fabrics to the industry, so that manufacturers can create the fire retardant clothing –particularly jeans– that are fashionable, durable, safe... and even more comfortable.

WEAR WOLF® FR Unlined Contractor Coverall



WL1200CO4 FR 2 Way Zipper Closure

Ladies (Short / Reg) XS-2XL

WL1250CO4 Buttons front Closure

Ladies (Short / Reg) 4-20

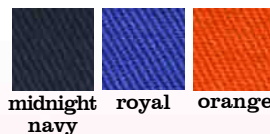
WL1290CO4 Concealed snaps front Closure

Ladies (Short / Reg) XS-2XL

- **FR Closure under front flap**
(3 options for closure, see below)
- High Tenacity FR Nomex® Sewing Thread
- One chest pocket with Pencil Division
- Two front pockets plus pass-through access
- Two back pockets
- Bartacked at all stress points, with FR Nomex® thread

TEIJIN **Teijinconex®**

- **4.5 oz. Teijinconex®**
93% Teijinconex® / 5% Teijin Twaron / 2% antistatic
- **NFPA 1975** Standard on Station/Work Uniforms for Fire and Emergency Services
- **NFPA 2112** (Flame-Resistant Garments for Protection of Industrial Personnel Against Flash Fire)
- **HRC 1: CSA Z462-08 & NFPA 70E**
(Electrical Workplace Standards)



FLASH FIRE



ELECTRIC ARC



HRC

WEAR WOLF® FR

Tunnel Collar Unlined Coverall / Velcro / **HI-VIS**



WL1500CO4

WL1502CO4 **HI-VIS tape 2"**

WL1504CO4 **HI-VIS tape 4"**

Ladies (Short / Reg) XS-2XL

- FR 2 Way Zipper Closure (YKK/Nomex® Tape) under front flap with FR Velcro®
- High Tenacity FR Nomex® Sewing Thread
- Adjustable cuffs
- Tunnel collar with FR Velcro®
- Two large back pockets
- Two lower front patch pockets with side access vents
- One tool pocket on rear right leg
- Elasticized back side waist
- Fully stitched bi-swing back
- Bartacked at all stress points, with FR Nomex® thread

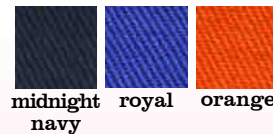
Also Available:

- 360° Visibility with front and back 2" or 4" wide 3M™ Scotchlite™ Silver reflective tape FR from Davey Textile Solutions Inc., and all around calves and sleeves.



TEIJIN
Teijinconex®

- **4.5 oz. Teijinconex®**
93% Teijinconex® / 5% Teijin Twaron / 2% antistatic
- **NFPA 1975** Standard on Station/Work Uniforms for Fire and Emergency Services
- **NFPA 2112** (Flame-Resistant Garments for Protection of Industrial Personnel Against Flash Fire)
- **HRC 1: CSA Z462-08 & NFPA 70E**
(Electrical Workplace Standards)



FLASH FIRE



ELECTRIC ARC



HRC

WEAR WOLF® FR Deluxe Unlined Coverall



WL1600CO6

WL1600CO5

Ladies (Short / Reg) 4-20

- FR 2 Way Zipper Closure (YKK/Nomex® Tape) under front flap with concealed snaps closures
- High Tenacity FR Nomex® Sewing Thread
- Tunnel Collar close with concealed snaps
- Pencil Division
- Sleeve Pocket
- Two front pockets plus pass-through access with concealed snap closures
- Two back pockets with concealed snap closures
- Utility back pocket
- Cuff with concealed snaps closures
- Pleated action back for ease of movement
- Back Side elasticsation for a comfortable fit
- Bartacked at all stress points, with FR Nomex® thread



TEIJIN Teijinconex®

- **6 oz. Teijinconex®**
93% Teijinconex® / 5% Teijin Twaron / 2% antistatic
- **NFPA 1975** Standard on Station/Work Uniforms for Fire and Emergency Services
- **NFPA 2112** (Flame-Resistant Garments for Protection of Industrial Personnel Against Flash Fire)
- **HRC 1: CSA Z462-08 & NFPA 70E**
(Electrical Workplace Standards)



midnight
navy



royal



FLASH FIRE



ELECTRIC ARC



1
HRC

Teijinconex®

- **5 oz. Teijinconex®**
93% Teijinconex® / 5% Teijin Twaron / 2% antistatic
- **NFPA 1975** Standard on Station/Work Uniforms for Fire and Emergency Services
- **NFPA 2112** (Flame-Resistant Garments for Protection of Industrial Personnel Against Flash Fire)
- **HRC 1: CSA Z462-08 & NFPA 70E**
(Electrical Workplace Standards)



midnight
navy



FLASH FIRE



ELECTRIC ARC



1
HRC

WEAR WOLF® FR

Deluxe Unlined Coverall **HI-VIS**



WL1602CO4 **HI-VIS tape 2"**

WL1604CO4 **HI-VIS tape 4"**

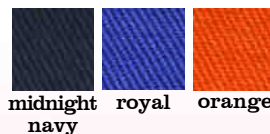
Ladies (Short / Reg) 4-20

- FR 2 Way Zipper Closure (YKK/Nomex® Tape) under front flap with concealed snaps closures
- High Tenacity FR Nomex® Sewing Thread
- Tunnel Collar close with concealed snaps
- Pencil Division
- Sleeve Pocket
- Two front pockets plus pass-through access with concealed snap closures
- Two back pockets with concealed snap closures
- Utility back pocket
- Cuff with concealed snaps closures
- Pleated action back for ease of movement
- Back Side elastication for a comfortable fit
- Bartacked at all stress points, with FR Nomex® thread
- 360° Visibility with front and back **2" or 4" wide 3M™ Scotchlite™** Silver reflective tape FR from Davey Textile Solutions Inc., and all around calves and sleeves.



TEIJIN
Teijinconex®

- **4.5 oz. Teijinconex®**
93% Teijinconex® / 5% Teijin Twaron / 2% antistatic
- **NFPA 1975** Standard on Station/Work Uniforms for Fire and Emergency Services
- **NFPA 2112** (Flame-Resistant Garments for Protection of Industrial Personnel Against Flash Fire)
- **HRC 1: CSA Z462-08 & NFPA 70E**
(Electrical Workplace Standards)



WEAR WOLF® FR

Deluxe Unlined Vented Coverall / Mesh Gas Monitor Pocket / **HI-VIS**



*American Version
Back*

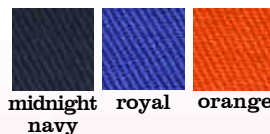
WL1630CO4

WL1632CO4 **HI-VIS tape 2"**

WL1634CO4 **HI-VIS tape 4"**

TEIJIN
Teijinconex®

- **4.5 oz. Teijinconex®**
93% Teijinconex® / 5% Teijin Twaron / 2% antistatic
- **NFPA 1975** Standard on Station/Work Uniforms for Fire and Emergency Services
- **NFPA 2112** (Flame-Resistant Garments for Protection of Industrial Personnel Against Flash Fire)
- **HRC 1: CSA Z462-08 & NFPA 70E**
(Electrical Workplace Standards)



Ladies (Short / Reg) XS-2XL

- FR 2 Way Zipper Closure (YKK/Nomex® Tape) under front flap with Velcro
- High Tenacity FR Nomex® Sewing Thread
- Two chest pocket with Velcro closure / one with pencil division
- One upper pockets with Mesh Gas Monitor Pocket made of mesh FR 6.15 oz from Oratex Pro-Techt#M-11347 55% modacrylic/45% cotton (no melt, no drip)
- Ventilated Rear Cape and Arm Pit with FR Mesh made of 6.15 oz from Oratex Pro-Techt#M-11347
- Two front pockets plus pass-through access
- Two back pockets
- Utility back pocket
- Adjustable Velcro closures on wrist
- Back Side elastication for a comfortable fit
- Bartacked at all stress points, with FR Nomex® thread

Also Available:

- 360° Visibility with front and back **2" or 4" wide 3M™ Scotchlite™** Silver reflective tape FR from Davey Textile Solutions Inc., and all around calves and sleeves.



WEAR WOLF® FR

Unlined Air Force Flight Suit



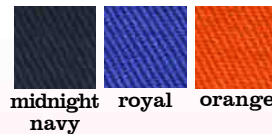
WL1500CO4

Ladies (Short / Reg) XS-2XL

- FR 2 Way VISLON® Zipper Closure under front flap with concealed snaps
- High Tenacity FR Nomex® Sewing Thread
- Shoulder epaulettes for command bars
- Velcro patch on left upper chest
- Two VISLON® zipper chest pockets
- VISLON® Zipper leg & thigh pockets
- Sleeve pocket with VISLON® zipper
- Knife pocket
- Hook & loop sleeve tabs
- Hook & loop waist tabs
- VISLON® Zipper on base of leg to help get suit on with boots
- Elasticized back waist
- Fully stitched bi-swing back
- Bartacked at all stress points, with FR Nomex® thread

TEIJIN Teijinconex®

- **4.5 oz. Teijinconex®**
93% Teijinconex® / 5% Teijin Twaron / 2% antistatic
- **NFPA 1975** Standard on Station/Work Uniforms for Fire and Emergency Services
- **NFPA 2112** (Flame-Resistant Garments for Protection of Industrial Personnel Against Flash Fire)
- **HRC 1: CSA Z462-08 & NFPA 70E**
(Electrical Workplace Standards)



WEAR WOLF® FR

Unlined Petroleum Coverall / HI-VIS



WL1800CO4 HI-VIS tape 1"

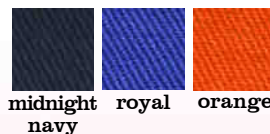
Ladies (Short / Reg) XS-2XL

- FR 2 Way Zipper Closure (YKK/Nomex® Tape) under front flap with concealed snaps
- High Tenacity FR Nomex® Sewing Thread
- 2 front chest pockets with flaps and concealed snap closure
- Hydrogen Sulfide personal monitor loop above left breast pocket
- 2 slash inside front pocket at waist
- Concealed snaps on adjustable cuffs
- Tunnel collar with concealed snap
- Two large back pockets
- Two lower front patch pockets with side access vents
- One tool pocket on rear right leg
- Elasticized back side waist
- Fully stitched bi-swing back
- 2 double stitched back pockets with concealed snap closure + 1 flap on right pocket
- Tool pocket on right leg
- Left Sleeve pocket with Divided pen holder
- Bartacked at all stress points, with FR Nomex® thread
- 360° Visibility with front and back 1" wide 3M™ Scotchlite™ Silver reflective tape FR from Davey Textile Solutions Inc., and all around calves and sleeves.



TEIJIN Teijinconex®

- **4.5 oz. Teijinconex®**
93% Teijinconex® / 5% Teijin Twaron / 2% antistatic
- **NFPA 1975** Standard on Station/Work Uniforms for Fire and Emergency Services
- **NFPA 2112** (Flame-Resistant Garments for Protection of Industrial Personnel Against Flash Fire)
- **HRC 1: CSA Z462-08 & NFPA 70E**
(Electrical Workplace Standards)



FLASH FIRE



ELECTRIC ARC



HRC

WEAR WOLF® FR

Basic Work Pant / Low Rise



WL126CO4

WL126CO6

Ladies (Leg 28/30/32) 26-42

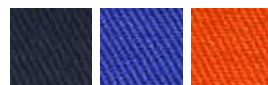
- Solid brass zipper (YKK/Nomex® Tape)
- Plastic Button closure at waist
- High Tenacity FR Nomex® Sewing Thread
- Two front deep quarter-top pockets
- Two reinforced back welt pockets, one with tab and button
- Low rise fit
- Fly constructed like jeans
- Bartacked at all stress points, with FR Nomex® thread



TEIJIN

Teijinconex®

- **4.5 oz. Teijinconex®**
93% Teijinconex® / 5% Teijin Twaron / 2% antistatic
- **NFPA 1975** Standard on Station/Work Uniforms for Fire and Emergency Services
- **NFPA 2112** (Flame-Resistant Garments for Protection of Industrial Personnel Against Flash Fire)
- **HRC 1: CSA Z462-08 & NFPA 70E**
(Electrical Workplace Standards)

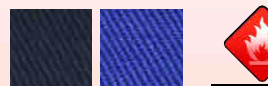


midnight navy royal orange



Teijinconex®

- **6 oz. Teijinconex®**
93% Teijinconex® / 5% Teijin Twaron / 2% antistatic
- **NFPA 1975** Standard on Station/Work Uniforms for Fire and Emergency Services
- **NFPA 2112** (Flame-Resistant Garments for Protection of Industrial Personnel Against Flash Fire)
- **HRC 1: CSA Z462-08 & NFPA 70E**
(Electrical Workplace Standards)



midnight navy royal orange



WEAR WOLF® FR

Basic Work Pant / Regular Rise



WL106CO4

WL106CO6

Ladies (Leg 28/30/32) 26-42

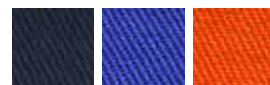
- Solid brass zipper (YKK/Nomex® Tape)
- Plastic Button closure at waist
- High Tenacity FR Nomex® Sewing Thread
- Two front deep quarter-top pockets
- Two reinforced back welt pockets, one with tab and button
- Regular rise fit
- Fly constructed like jeans
- Bartacked at all stress points, with FR Nomex® thread



TEIJIN

Teijinconex®

- **4.5 oz. Teijinconex®**
93% Teijinconex® / 5% Teijin Twaron / 2% antistatic
- **NFPA 1975** Standard on Station/Work Uniforms for Fire and Emergency Services
- **NFPA 2112** (Flame-Resistant Garments for Protection of Industrial Personnel Against Flash Fire)
- **HRC 1: CSA Z462-08 & NFPA 70E**
(Electrical Workplace Standards)



midnight navy royal orange



Teijinconex®

- **6 oz. Teijinconex®**
93% Teijinconex® / 5% Teijin Twaron / 2% antistatic
- **NFPA 1975** Standard on Station/Work Uniforms for Fire and Emergency Services
- **NFPA 2112** (Flame-Resistant Garments for Protection of Industrial Personnel Against Flash Fire)
- **HRC 1: CSA Z462-08 & NFPA 70E**
(Electrical Workplace Standards)



midnight navy royal



WEAR WOLF® FR

Cargo Work Pant / Low Rise



WL623CO4

WL623CO6

Ladies (Leg 28/30/32) 26-42

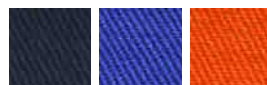
- Solid brass zipper (YKK/Nomex® Tape)
- Plastic Button closure at waist
- High Tenacity FR Nomex® Sewing Thread
- Two front deep quarter-top pockets
- Side seam pleated cargo pockets with button flap closure
- Two rear inside pockets with button flap closure
- Regular fit / Low rise
- Fly constructed like jeans
- Bartacked at all stress points, with FR Nomex® thread



TEIJIN

Teijinconex®

- **4.5 oz. Teijinconex®**
93% Teijinconex® / 5% Teijin Twaron / 2% antistatic
- **NFPA 1975** Standard on Station/Work Uniforms for Fire and Emergency Services
- **NFPA 2112** (Flame-Resistant Garments for Protection of Industrial Personnel Against Flash Fire)
- **HRC 1: CSA Z462-08 & NFPA 70E**
(Electrical Workplace Standards)



midnight
navy

royal

orange



FLASH FIRE



ELECTRIC ARC



HRC

Teijinconex®

- **6 oz. Teijinconex®**
93% Teijinconex® / 5% Teijin Twaron / 2% antistatic
- **NFPA 1975** Standard on Station/Work Uniforms for Fire and Emergency Services
- **NFPA 2112** (Flame-Resistant Garments for Protection of Industrial Personnel Against Flash Fire)
- **HRC 1: CSA Z462-08 & NFPA 70E**
(Electrical Workplace Standards)



midnight
navy

royal



FLASH FIRE



ELECTRIC ARC



HRC

WEAR WOLF® FR

Cargo Work Pant / Regular Rise



WL633CO4

WL633CO6

Ladies (Leg 28/30/32) 26-42

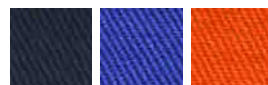
- Solid brass zipper (YKK/Nomex® Tape)
- Plastic Button closure at waist
- High Tenacity FR Nomex® Sewing Thread
- Two front deep quarter-top pockets
- Side seam pleated cargo pockets with button flap closure
- Two rear inside pockets with button flap closure
- Regular rise
- Fly constructed like jeans
- Bartacked at all stress points, with FR Nomex® thread



TEIJIN

Teijinconex®

- **4.5 oz. Teijinconex®**
93% Teijinconex® / 5% Teijin Twaron / 2% antistatic
- **NFPA 1975** Standard on Station/Work Uniforms for Fire and Emergency Services
- **NFPA 2112** (Flame-Resistant Garments for Protection of Industrial Personnel Against Flash Fire)
- **HRC 1: CSA Z462-08 & NFPA 70E**
(Electrical Workplace Standards)



midnight
navy

royal

orange



FLASH FIRE



ELECTRIC ARC



HRC

Teijinconex®

- **6 oz. Teijinconex®**
93% Teijinconex® / 5% Teijin Twaron / 2% antistatic
- **NFPA 1975** Standard on Station/Work Uniforms for Fire and Emergency Services
- **NFPA 2112** (Flame-Resistant Garments for Protection of Industrial Personnel Against Flash Fire)
- **HRC 1: CSA Z462-08 & NFPA 70E**
(Electrical Workplace Standards)



midnight
navy

royal



FLASH FIRE

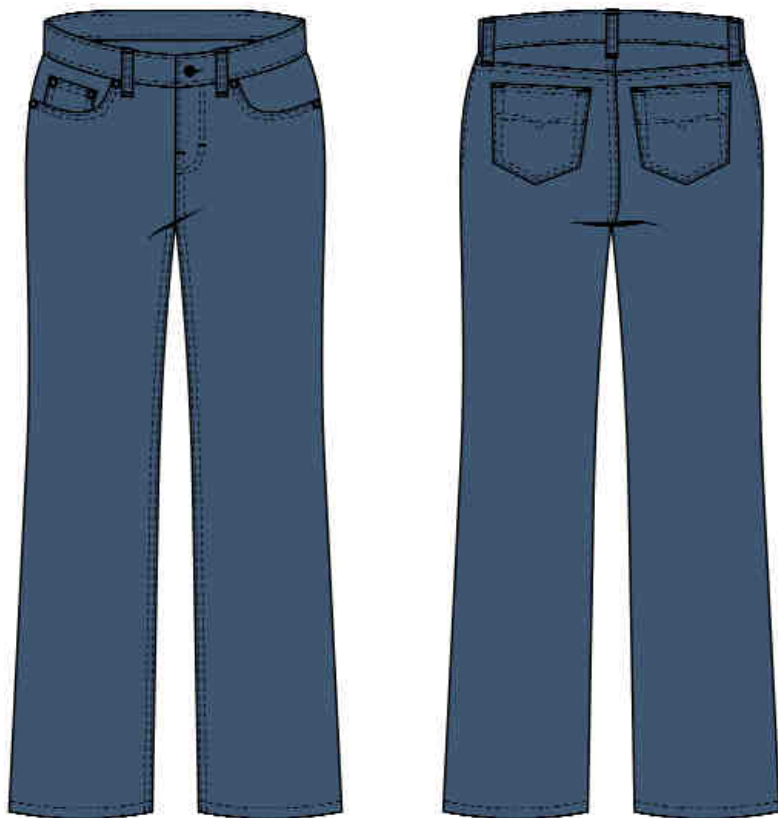


ELECTRIC ARC



HRC

WEAR WOLF® FR Jean Style Pant / Low Rise



WL400CO6

Ladies (Leg 28/30/32) 26-42

- Solid brass zipper (YKK/Nomex® Tape)
- One-piece waistband
- High Tenacity FR Nomex® Sewing Thread
- Arc-resistant Button Waistband Closure with Concealed Inner Tack Reduces Heat Conductivity
- Two reinforced front deep scoop pockets
- Watch pocket
- Two reinforced back pockets (5 pockets style)
- Back yoke
- Bootcut / Low rise
- Bartacked at all stress points, with FR Nomex® thread



TEIJIN Teijinconex®

- **6 oz. Teijinconex®**
93% Teijinconex® / 5% Teijin Twaron / 2% antistatic
- **NFPA 1975** Standard on Station/Work Uniforms for Fire and Emergency Services
- **NFPA 2112** (Flame-Resistant Garments for Protection of Industrial Personnel Against Flash Fire)
- **HRC 1: CSA Z462-08 & NFPA 70E**
(Electrical Workplace Standards)



midnight
navy



royal



FLASH FIRE



ELECTRIC ARC



1
HRC

WEAR WOLF® FR

Bootcut Low Rise / 5 Pockets Jean



WL400CO14

Ladies (Leg 28/30/32) 26-42

- Solid brass FR zipper (YKK/Nomex® Tape)
- One-piece waistband
- Arc-resistant Button Waistband Closure with Concealed Inner Tack Reduces Heat Conductivity
- High Tenacity FR Nomex® Sewing Thread
- Two reinforced front deep scoop pockets
- Watch pocket
- Two reinforced back pockets (5 pockets style)
- Back yoke
- Bootcut / Low rise
- Bartacked at all stress points, with FR Teijin thread

CONE DENIM®

- **14.5 oz. Statestrong FR Black Denim**
Made with Twaron® (a versatile high-performance fiber Fiber) and Cotton
- **NFPA 1975** Standard on Station/Work Uniforms for Fire and Emergency Services
- **NFPA 2112** (Flame-Resistant Garments for Protection of Industrial Personnel Against Flash Fire)
- **HRC 1: CSA Z462-08 & NFPA 70E**
(Electrical Workplace Standards)



black denim



FLASH FIRE



ELECTRIC ARC



HRC

WEAR WOLF® FR

Bootcut Mid Rise / 5 Pockets Jean



WL300CO14

Ladies (Leg 28/30/32) 26-42

- Solid brass FR zipper (YKK/Nomex® Tape)
- One-piece waistband
- Arc-resistant Button Waistband Closure with Concealed Inner Tack Reduces Heat Conductivity
- High Tenacity FR Nomex® Sewing Thread
- Two reinforced front deep scoop pockets
- Watch pocket
- Two reinforced back pockets (5 pockets style)
- Back yoke
- Bootcut / Mid rise
- Bartacked at all stress points, with FR Teijin thread

CONE DENIM®

- **14.5 oz. Statestrong FR Black Denim**
Made with Twaron® (a versatile high-performance fiber Fiber) and Cotton
- **NFPA 1975** Standard on Station/Work Uniforms for Fire and Emergency Services
- **NFPA 2112** (Flame-Resistant Garments for Protection of Industrial Personnel Against Flash Fire)
- **HRC 1: CSA Z462-08 & NFPA 70E**
(Electrical Workplace Standards)



black denim



FLASH FIRE



ELECTRIC ARC



HRC

WEAR WOLF® FR Work Snap Shirt



WL13CO4

WL13CO5

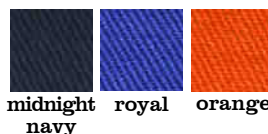
Ladies (Short / Reg) XS-2XL

- Placket front with snap closure with button at neck
- Two chest pockets with snap flap closures and sewn-in pencil stall
- Banded, topstitched collar
- Topstitched cuffs, with adjustable snaps closures
- Extra-long tail and roomy body for ease of movement
- High Tenacity FR Teijin Sewing Thread
- Bartacked at all stress points, with FR Teijin thread



TEIJIN Teijinconex®

- **4.5 oz. Teijinconex®**
93% Teijinconex® / 5% Teijin Twaron / 2% antistatic
- **NFPA 1975** Standard on Station/Work Uniforms for Fire and Emergency Services
- **NFPA 2112** (Flame-Resistant Garments for Protection of Industrial Personnel Against Flash Fire)
- **HRC 1: CSA Z462-08 & NFPA 70E**
(Electrical Workplace Standards)



Teijinconex®

- **5 oz. Teijinconex®**
93% Teijinconex® / 5% Teijin Twaron / 2% antistatic
- **NFPA 1975** Standard on Station/Work Uniforms for Fire and Emergency Services
- **NFPA 2112** (Flame-Resistant Garments for Protection of Industrial Personnel Against Flash Fire)
- **HRC 1: CSA Z462-08 & NFPA 70E**
(Electrical Workplace Standards)



WEAR WOLF® FR Work Button Shirt



WL14CO4

WL14CO5

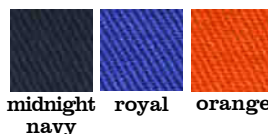
Ladies (Short / Reg) XS-2XL

- Six buttons with vertical buttonholes, button at neck with horizontal buttonhole
- Two chest pockets with button flap closures and sewn-in pencil stall
- Banded, topstitched collar
- Topstitched cuffs, with adjustable button closures
- Placket front with button closure
- Extra-long tail and roomy body for ease of movement
- High Tenacity FR Teijin Sewing Thread
- Bartacked at all stress points, with FR Teijin thread



TEIJIN Teijinconex®

- **4.5 oz. Teijinconex®**
93% Teijinconex® / 5% Teijin Twaron / 2% antistatic
- **NFPA 1975** Standard on Station/Work Uniforms for Fire and Emergency Services
- **NFPA 2112** (Flame-Resistant Garments for Protection of Industrial Personnel Against Flash Fire)
- **HRC 1: CSA Z462-08 & NFPA 70E**
(Electrical Workplace Standards)



Teijinconex®

- **5 oz. Teijinconex®**
93% Teijinconex® / 5% Teijin Twaron / 2% antistatic
- **NFPA 1975** Standard on Station/Work Uniforms for Fire and Emergency Services
- **NFPA 2112** (Flame-Resistant Garments for Protection of Industrial Personnel Against Flash Fire)
- **HRC 1: CSA Z462-08 & NFPA 70E**
(Electrical Workplace Standards)



WEAR WOLF® FR Premium Deluxe Shirt



WL15CO4

WL15CO5

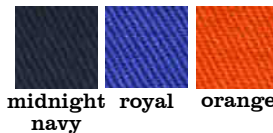
Ladies (Short / Reg) XS-2XL

- Placket front with button closure with button at neck
- Two chest pockets with snap flap closures and sewn-in pencil stall
- Banded, topstitched, button down collar
- Front and back western yokes
- Topstitched cuffs, with adjustable button closures
- Tailored sleeve placket
- Double-stitched main seams
- Extra-long tail and roomy body for ease of movement
- High Tenacity FR Teijin Sewing Thread
- Bartacked at all stress points, with FR Teijin thread



TEIJIN Teijinconex®

- **4.5 oz. Teijinconex®**
93% Teijinconex® / 5% Teijin Twaron / 2% antistatic
- **NFPA 1975** Standard on Station/Work Uniforms for Fire and Emergency Services
- **NFPA 2112** (Flame-Resistant Garments for Protection of Industrial Personnel Against Flash Fire)
- **HRC 1: CSA Z462-08 & NFPA 70E**
(Electrical Workplace Standards)



Teijinconex®

- **5 oz. Teijinconex®**
93% Teijinconex® / 5% Teijin Twaron / 2% antistatic
- **NFPA 1975** Standard on Station/Work Uniforms for Fire and Emergency Services
- **NFPA 2112** (Flame-Resistant Garments for Protection of Industrial Personnel Against Flash Fire)
- **HRC 1: CSA Z462-08 & NFPA 70E**
(Electrical Workplace Standards)



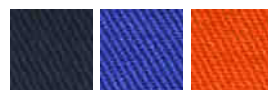
WEAR WOLF® FR

Vented Button Shirt / HI-VIS



TEIJIN
Teijinconex®

- **4.5 oz. Teijinconex®**
93% Teijinconex® / 5% Teijin Twaron / 2% antistatic
- **NFPA 1975** Standard on Station/Work Uniforms for Fire and Emergency Services
- **NFPA 2112** (Flame-Resistant Garments for Protection of Industrial Personnel Against Flash Fire)
- **HRC 1: CSA Z462-08 & NFPA 70E**
(Electrical Workplace Standards)



midnight navy royal orange



FLASH FIRE



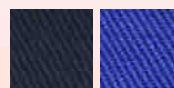
ELECTRIC ARC



HRC

Teijinconex®

- **5 oz. Teijinconex®**
93% Teijinconex® / 5% Teijin Twaron / 2% antistatic
- **NFPA 1975** Standard on Station/Work Uniforms for Fire and Emergency Services
- **NFPA 2112** (Flame-Resistant Garments for Protection of Industrial Personnel Against Flash Fire)
- **HRC 1: CSA Z462-08 & NFPA 70E**
(Electrical Workplace Standards)



midnight navy royal



FLASH FIRE



ELECTRIC ARC



HRC

WL1453CO4

WL1453CO5

Ladies (Short / Reg) XS-2XL

- Ventilated Rear Cape and Arm Pit with FR Mesh made of 6.15 oz from Oratex Pro-Techt#M-11347
- Placket front with button closure with button at neck
- Two chest pockets with button flap closures and sewn-in pencil stall
- Banded, topstitched collar
- Topstitched cuffs, with adjustable button closures
- Extra-long tail and roomy body for ease of movement
- High Tenacity FR Nomex® Sewing Thread
- Bartacked at all stress points, with FR Nomex® thread
- 360° Visibility with front and back 2" wide 3M™ Scotchlite™ Silver reflective tape FR from Davey Textile Solutions Inc., and all around waist and sleeves.



WEAR WOLF® FR

Lined Winter Bib Overall / **HI-VIS**



WL19CO3

WL19-4CO3 HI-VIS tape 4"

Ladies (Short / Reg) 4-20

- Durable Water Repellent Coating
- FR Zipper Closure (YKK/Nomex® Tape) under front flap with concealed snaps closures
- High Tenacity FR Nomex® Sewing Thread
- Comfortable elastic shoulder straps with adjustable plastic release buckles
- Hidden zipper closure at leg bottoms
- Two slash inside front pockets at waist
- Two chest pockets
- Two large back pockets
- Hammer loop on left leg & Tool pockets on right leg
- Bartacked at all stress points, with FR Nomex® thread

Also Available:

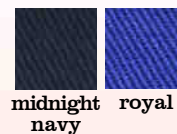
- 360° Visibility with 4" wide 3M™ Scotchlite™ Yellow/Silver/Yellow tape FR from Davey Textile Solutions Inc., striping around calves



TEIJIN

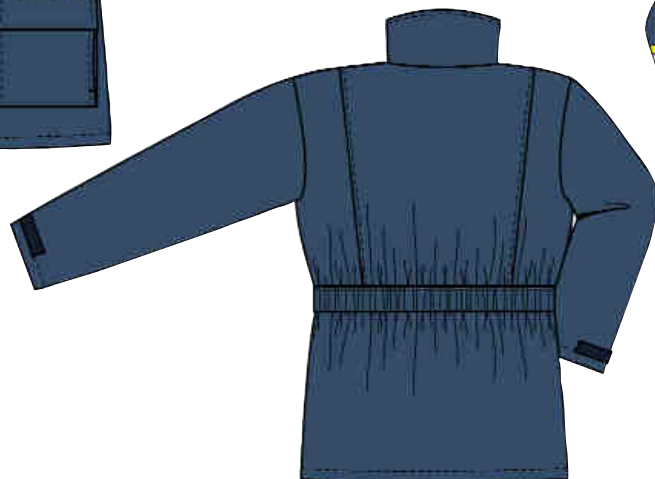
Teijinconex®

- **3.5 oz. Teijinconex®**
93% Teijinconex® / 5% Teijin Twaron / 2% antistatic
7 oz. or 10 oz Modacrylic lining
- **NFPA 1975** Standard on Station/Work Uniforms for Fire and Emergency Services
- **NFPA 2112** (Flame-Resistant Garments for Protection of Industrial Personnel Against Flash Fire)
- **HRC 1: CSA Z462-08 & NFPA 70E**
(Electrical Workplace Standards)



WEAR WOLF® FR

Winter Insulated Artic Parka / HI-VIS



WL10CO3

WL10-4CO3 HI-VIS tape 4"

Ladies (Short / Reg) XS-2XL

- Heavy-duty, two-way concealed taped brass zipper (YKK/Nomex® Tape) front closure
- Storm flap with hidden snap over front zipper closure
- Left chest inside pocket with concealed snap flap closure
- Two large bottom patch pockets with hidden snap flaps closure and hand warmer.
- Inside wind-breaker snow belt at waist
- Nomex® tricot inside cuffs
- Elastic waist on back for more comfort
- Pleated action back for ease of movement
- Snaps under the collar for an optional hood

Also Available:

- 360° Visibility with front and back **2" or 4" wide 3M™ Scotchlite™** Yellow/ Silver/Yellow or Silver reflective tape FR from Davey Textile Solutions Inc., and all around waist and sleeves.



TEIJIN

Teijinconex®

- **3.5 oz. Teijinconex®**
93% Teijinconex® / 5% Teijin Twaron / 2% antistatic
- **7 oz. or 10 oz Modacrylic lining**
- **NFPA 1975** Standard on Station/Work Uniforms for Fire and Emergency Services
- **NFPA 2112** (Flame-Resistant Garments for Protection of Industrial Personnel Against Flash Fire)
- **HRC 1: CSA Z462-08 & NFPA 70E** (Electrical Workplace Standards)



midnight
navy



royal



FLASH FIRE



ELECTRIC ARC



1
HRC

WEAR WOLF® FR Winter Insulated Bomber Jacket



WL15CO3

Ladies (Short / Reg) XS-2XL

- Heavy-duty, two-way concealed brass zipper (YKK/Nomex® Tape) front closure
- High Tenacity FR Nomex® Sewing Thread
- Two-layer stand-up collar
- Two large external patch pockets with concealed snap closure, with hand warmers
- Left chest inside pocket with concealed snap flap closure
- Fully tunneled elasticized waistband
- Nomex® tricot inside cuffs



TEIJIN Teijinconex®

- **3.5 oz. Teijinconex®**
93% Teijinconex® / 5% Teijin Twaron / 2% antistatic
- **7 oz. or 10 oz Modacrylic lining**
- **NFPA 1975** Standard on Station/Work Uniforms for Fire and Emergency Services
- **NFPA 2112** (Flame-Resistant Garments for Protection of Industrial Personnel Against Flash Fire)
- **HRC 1: CSA Z462-08 & NFPA 70E**
(Electrical Workplace Standards)



midnight
navy



royal



FLASH FIRE



ELECTRIC ARC



HRC

WEAR WOLF® FR Winter Insulated Vest Jacket Liner



WL16CO3

Ladies (Short / Reg) XS-2XL

- Reversible concealed taped FR zipper (YKK/Nomex® Tape) front closure
- Storm flap over front zipper
- High Tenacity FR Nomex® Sewing Thread
- Nomex® tricot collar
- Elastic back at waist
- 2 slash inside pockets

TEIJIN Teijinconex®

- **3.5 oz. Teijinconex®**
93% Teijinconex® / 5% Teijin Twaron / 2% antistatic
7 oz. or 10 oz Modacrylic lining
- **NFPA 1975** Standard on Station/Work Uniforms for Fire and Emergency Services
- **NFPA 2112** (Flame-Resistant Garments for Protection of Industrial Personnel Against Flash Fire)
- **HRC 1: CSA Z462-08 & NFPA 70E**
(Electrical Workplace Standards)



midnight
navy



royal



FLASH FIRE



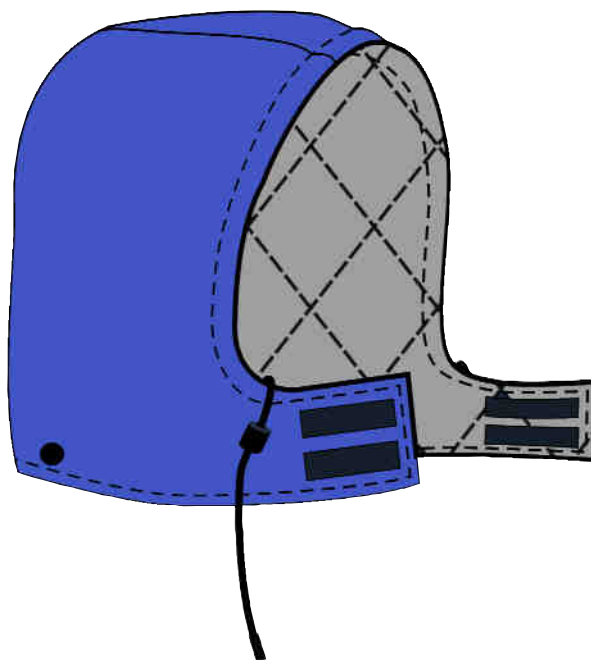
ELECTRIC ARC



1
HRC

WEAR WOLF® FR

Optional Snap-on Winter Hood



HOODLC03

Men's (Reg / Tall) S-5XL

TEIJIN

Teijinconex®

- **3.5 oz. Teijinconex®**
93% Teijinconex® / 5% Teijin Twaron / 2% antistatic
7 oz. or 10 oz Modacrylic lining
- **NFPA 1975** Standard on Station/Work Uniforms for Fire and Emergency Services
- **NFPA 2112** (Flame-Resistant Garments for Protection of Industrial Personnel Against Flash Fire)
- **HRC 1: CSA Z462-08 & NFPA 70E**
(Electrical Workplace Standards)



midnight
navy

royal



FLASH FIRE



ELECTRIC ARC



HRC



CARE AND MAINTENANCE OF WEAR WOLF FR™ GARMENTS

Wear Wolf FR™ workwear recommend Direct purchase or Rental/Cleaning program thru your favorite uniforms laundry service provider for precise maintenance and care of your Wear Wolf FR™ Durable Uniforms and Work Clothes made of Teijin FR fabric, in compliance hassle free. Or thru your favorite work clothes and uniforms provider by following carefully our (HMC) home maintenance and care of your Wear Wolf FR™ Durable Uniforms and Work Clothes made of Teijin FR fabric, in compliance hassle free.

Flame resistant particularity will not wash away if Care and Maintenance is done correctly

Wash and Care Recommendations for Teijin Flame Resistant Garments

COMMERCIAL LAUNDERING

- Process separately from other types of garments throughout the entire operation to prevent accumulation of lint and minimize pilling.
- Sort by shade to reduce staining or color transfer which may occur.
- Use low temperature (140°F max.), low alkalinity surfactant chemistry for water washing. Higher pH products and elevated wash temperatures accelerate color loss.
- Washing at hotter temperatures and higher levels of alkalinity may be necessary to remove soils. This will not damage the fabric or degrade the FR properties but may affect color. Removing flammable soils is more important than color retention.
- Use a multiple add procedure (break and second suds) where soil level requires.
- Do not use chlorine bleach. This will weaken the fabric and accelerate color loss. Use of oxygen bleach is acceptable where necessary.
- Temperature step-downs between baths should not exceed 15°F and cool to 100°F or less before extraction to minimize wrinkling.
- Rinse well and sour properly.
- As this fabric does not retain much moisture, short extraction at low levels should be sufficient. This should also reduce wrinkling.
- Condition at 140°-160°F stack temperature so fabric temperature measured in the basket does not exceed 280°F. This fabric will dry rapidly. Do not over dry. Excessive heat will cause color loss. Cool down to 100°F or less and remove promptly from the dryer.
- Shrinkage similar to 65/35 blends can be expected. The fabric will not stretch so allow for ease of motion in fitting wearers.
- Tunnel finishing will improve fabric smoothness but may cause hanger impressions. If creases in pants are desired, pressing will be required. Do not exceed 280°F fabric temperature.

HOME LAUNDERING

- Wash and dry separately to prevent accumulation of lint.
- Pre-treat greasy stains and do not overload the washer to help insure removal of soils.
- Wash in hot water (up to 140°F) using any typical home laundry detergent. Do not use tal low soap.
- **Do not use chlorine bleach. Do not use starch. Do not use fabric softeners.**
- Do not over dry.
- For maximum flame resistance, greases and oils must be thoroughly removed. If home procedures do not accomplish this, commercial laundering or dry cleaning is recommended.

DRY CLEANING

Either perchloroethylene or petroleum solvent can be used. In cases of heavy, oily soil, this may be the preferred approach. With petroleum, it is necessary to ensure all solvent has been completely dried from the garment.

REPAIR AND MENDING

Minor repairs that do not affect the integrity of the garment should be made with like materials by sewing on patches or darning small holes.



Wash and Care Recommendations for Cone Denim Flame Resistant Garments



COMMERCIAL LAUNDRING

For Industrial Laundry we recommend normal IL Cotton Formula. Water temperature should not exceed 165°F/74°C. As below we recommend no bleach, softeners, or starch.

Generalized Wash Procedure for Cone Denim FR garments

Machine Wash, Permanent Press Cycle. Warm or Hot water can be used.

Washing Detergent Supplies

Cone Denim FR garments can be washed with a wide variety of detergents. Any recognized commercial laundry detergent that does not contain bleach is satisfactory.

DO NOT USE These Products

We recommend no chlorine bleach. The repeated use of chlorine bleach can strip away the FR finish. We also recommend no softeners. While most of the commercial softeners on the market have no effect of the fabric's FR properties, there may be some that will form a coating and burn. While we cannot check our ever softener, for safety we recommend no softeners. We recommend no starch as this could cause a surface burn.

Tumble Drying

Tumble Dry on Permanent Press Cycle. Remove when dry and place on hanger.

Ironing

Touch up iron Warm if desired.

DRY CLEANING

Dry Cleaning is permitted. Garments must be free of any re-deposition.

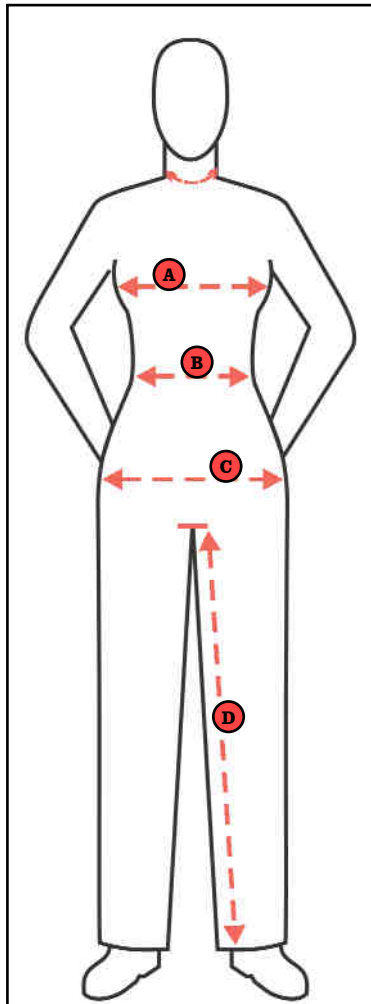
MAINTENANCE

In order to perform its protective function, a garment must be maintained in its original condition. Rips, tears and abrasion to the fabric are normal consequences of use and they should be repaired as soon as possible. For advice on proper repair techniques, contact your uniform service provider or Wear Wolf™FR Customer Service.



WEAR WOLF™ FR LADIES SIZING CHART

All you need for a proper fit for all your Wear Wolf FR™ garments.



How to Measure For a Proper Fit

A Bust

Standing to her side and holding tape firmly under one arm, measure around the shoulder blades, under arms and around the fullest part of her bust. She should keep her arms to her sides as much as possible-it will effect the measurement if they are raised too high. Number of inches = bust size.

B Waist

Standing to her side, measure around her natural waistline. Number of inches = waist size.

C Hips

Standing to her side, measure around the fullest part of her hips. Start 7 to 8 inches below the natural waistline. If the tape can't be moved up and down, it's not around the fullest part. Number of inches = hips (seat) measurement.

D Inseam

You stand in front. Have her stand with both feet flat on the ground with legs straight and slightly apart. Have her hold one end of the tape measure at the base of her crotch seam. You straighten the tape down the inside of her leg to the top of her shoe. Number of inches = inseam length.

LADIES SIZING CHART							
	XS	S	M	L	XL	2XL	3XL
	4	6-8	10-12	14-16	18-20	22-24	26-28
Bust	33	34-35	36-37½	39-40½	42½-44½	46½-48½	50½-52½
Waist	25	26-27	28-29½	31-32½	34½-36½	38½-40½	41½-44½
Hips	35½	36½-37½	38½-40	41½-43	45-47	49-51	53-55



WEAR WOLF™ FR LADIES SIZING CHART

GARMENT TYPE	ORDER THIS SIZE
SHIRTS	Refer to LADIES SIZING CHART on page 31.
COVERALLS	Refer to LADIES SIZING CHART on page 31. If you are between sizes: choose one size larger if you are taller than 6'0" or one size smaller if you are shorter than 5'-6"
OVERALLS	Refer to LADIES SIZING CHART on page 31. If you are between sizes: choose one size larger if you are taller than 6'0" or one size smaller if you are shorter than 5'-6"
PANTS	Order by Waist and Inseam measurement when you place your order (even sizes only, except when otherwise indicated).
BELTS	Order one size larger than regular waist size.
OUTERWEAR VEST-JACKET- JACKET LINER- PARKA-BOMBER	Refer to LADIES SIZING CHART on page 31.
FOOTWEAR	Allow extra room if extra heavy socks are worn. If offered in whole sizes only and half-size is needed, order the next largest size. Women purchasing men's footwear order 1½ sizes smaller. Widths vary by manufacturer.

The logo for FR Rough Rider, featuring a shield with 'FR' inside, surrounded by flames, and the text 'ROUGH RIDER' in a stylized font.

VENDU À/SOLD TO: _____
RUE/STREET: _____
VILLE/CITY: _____
PROVINCE/STATE: _____
TÉL./PHONE: _____

CUSTOMER #	
ORDER # / SHIP TO:	

REPRÉSENTANT/
SALES REP.

REPRÉSENTANT/ SALES REP.

EXPÉDIÉ PAR
SHIP VIA

7

[illegible]

COMMENTAIRES/COMMENTS:

DATE:



P.O.#:



WEAR WOLF

PROTECTIVE CLOTHING

FR



Teijinconex®

TEIJIN

Basic Work Pant / Regular Rise

WL106CO6

6 oz. Teijinconex®

93% Teijinconex® / 5% Teijin Twaron / 2% antistatic
(see page 14)



FLASH FIRE



ELECTRIC ARC



HRC

TEIJIN

Human Chemistry, Human Solutions



ROUGH RIDER FR, LLC
3107 NE 27th Street #108, Fort Lauderdale, Florida 33308
PHONE: 1-819-769-0234
FAX: 1-819-769-4010
EMAIL: service@roughriderfrworkwear.com